



**Presents:**

**Consumer-Driven Healthcare: Hitting  
The High Points of the Emerging Trends  
In Healthcare Financing**

**Pending Approval for 1.0 HRCI  
Recertification Credit**

**Tuesday, May 16, 2006  
8:00 AM – 10:15 AM**

at the Best Western Hotel  
11580 Roosevelt Blvd.  
Philadelphia, PA



Approved for 1.0 HRCI Recertification Credits

**Consumer-Driven  
Healthcare:  
Hitting  
The High Points of the  
Emerging Trends  
In Healthcare Financing**

Everywhere you turn, the popular press is espousing the nearly miraculous power of HSA's and HRA's to drive down bills. But do the facts and underlying actuarial assumptions support this rose-colored view of the power of Consumer Driven Healthcare (CDHC)?

The value of a return to the halcyon days of deductibles, coinsurance and renewed patient-provider interplay may not deliver all that you may believe.

Our May presentation examines the current state-of-play for these programs and provides alternate steps that may achieve the desired outcomes faster.



## About our Speaker:

**Kevin O'Hara**  
**Vice President, Training and Compliance**  
**Corporate Synergies**

Kevin O'Hara is a recognized industry speaker on structured health benefits, HIPAA compliance, self-insurance, and rating and underwriting. He served previously as the Director of the Insurance Development Institute. Now, through the Corporate Synergies Institute, he has conducted more than three hundred educational sessions for brokerage, sales, and Human Resources professionals.

Mr. O'Hara has worked in various capacities in the medical and insurance communities. His direct work has provided him with a view of the medical model as both a payer and practitioner.

Mr. O'Hara graduated from the University of Notre Dame and earned a Master's Degree from the University of Pennsylvania. His professional achievements include numerous industry designations and honors, including the prestigious Louis G. Mattei Award, the highest recognition in the New Jersey medical insurance field.

## DIRECTIONS

The Best Western is conveniently located on US 1; 3 miles south of the PA Turnpike exit 381, or 4 miles West of I-95 Woodhaven Road exit. The hotel's phone number is 215-464-9500.

## PROGRAM SCHEDULE

8:00 Breakfast and Networking  
8:30 Business Meeting, Introductions and "Hot Topics"  
9:00 Featured Speaker  
10:15 Networking

*If you need a special accommodation to attend, please call (215) 698-7116*

Please register and send your check in advance. You can always substitute a staff member if a conflict occurs.

**ONLINE REGISTRY IS UP & RUNNING – ANY PROBLEM, JUST PRINT OUT THE FORM & FAX TO:  
215-698-7116**

## MARK YOUR CALENDAR

June 6, 2006 – Special Evening Networking Event at Sesame Place

**SEE OUR CHAPTER WEB PAGE AT:**

[www.SEPASHRM.org](http://www.SEPASHRM.org)

**This program is pending approval for 1.0 recertification credit hour toward PHR & SPHR recertification through HRCI. For more information visit [www.hrci.org](http://www.hrci.org)**

## Monthly BREAKFAST MEETING

**TUESDAY**

**8:00 AM – 10:15 AM**

May 16, 2006

Complete this registration form and mail it, along with your check to Susan Warner. Reservations must be received by Friday, May 12, 2006.

If you are unable to meet this deadline, please try to call Susan or Larry at (215) 698-7116, by 10 AM, Monday, May 15, 2006, if you plan to attend.

Make your check payable to: SEPA SHRM and mail to:

**Susan Warner, J.D., SPHR**  
**Chapter Administrator**  
**C/o Human Resource Trouble Shooters**  
**9090 Pine Road**  
**Office Suite A**  
**Philadelphia, PA 19115**  
**(215) 698-7116**

SEPA SHRM Chapter Members	\$12.00
Non-SEPA Chapter Members	\$17.00
Full-Time SEPA sponsored students	Free

# Attending \_\_\_\_\_

Amount enclosed \$ \_\_\_\_\_

SHRM # \_\_\_\_\_

Name \_\_\_\_\_

Title \_\_\_\_\_

Employer \_\_\_\_\_

Phone Number \_\_\_\_\_

Guest Name \_\_\_\_\_

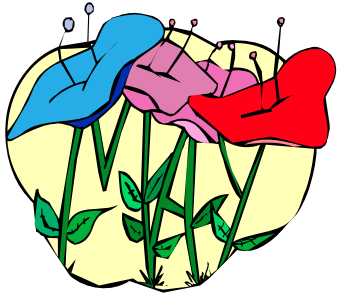
Employer \_\_\_\_\_

Phone Number \_\_\_\_\_

E-Mail \_\_\_\_\_



**South Eastern Pennsylvania SHRM**  
c/o Human Resource Trouble Shooters  
9090 Pine Road - Office Suite 'B'  
Philadelphia, PA 19115-4417



Per Section 5(A)(3) of the Can-Spam Act of 2003, this Communication may constitute an advertisement regarding SEPA SHRM services. If you do not wish to receive notices of this type, please notify me by replying to this e-mail and Asking that we remove you from this e-mail list.

ADVERTISEMENT